

The
Vividz



@ B u k i t J a l i l

by



NEW AGE INGENUITY



Project Name Meaning

Why

The term "Vivid" directly reflects the project's focus on vibrant, dynamic colors. It signifies the use of bright and lively hues to enhance the living environment, aligning with the concept of "Colores" and the power of color in creating a wellness-oriented space.

"The Vividz"?

"Vivid" also suggests an energetic and passionate approach to life. Conveying a sense of joy, enthusiasm, and a deep appreciation for living fully and colorfully.

Concept : Colores

Landscape color therapy known as chromotherapy is a holistic healing that uses color to balance the physical, emotional and wellness health. When applied, it has a profound effect on landscape environments, opening the senses to experience life.

In this project, wellness takes center stage as the fundamental cornerstone. Here, wellness is seamlessly woven into the fabric of daily life, guiding every decision and choice. Each element and design is meticulously curated to foster inclusivity and mindfulness, ensuring that wellness is not just an aspiration but a vibrant reality.

The power of colour and wellness in a natural settings.



Site Location & Accessibility



SITE LOCATION

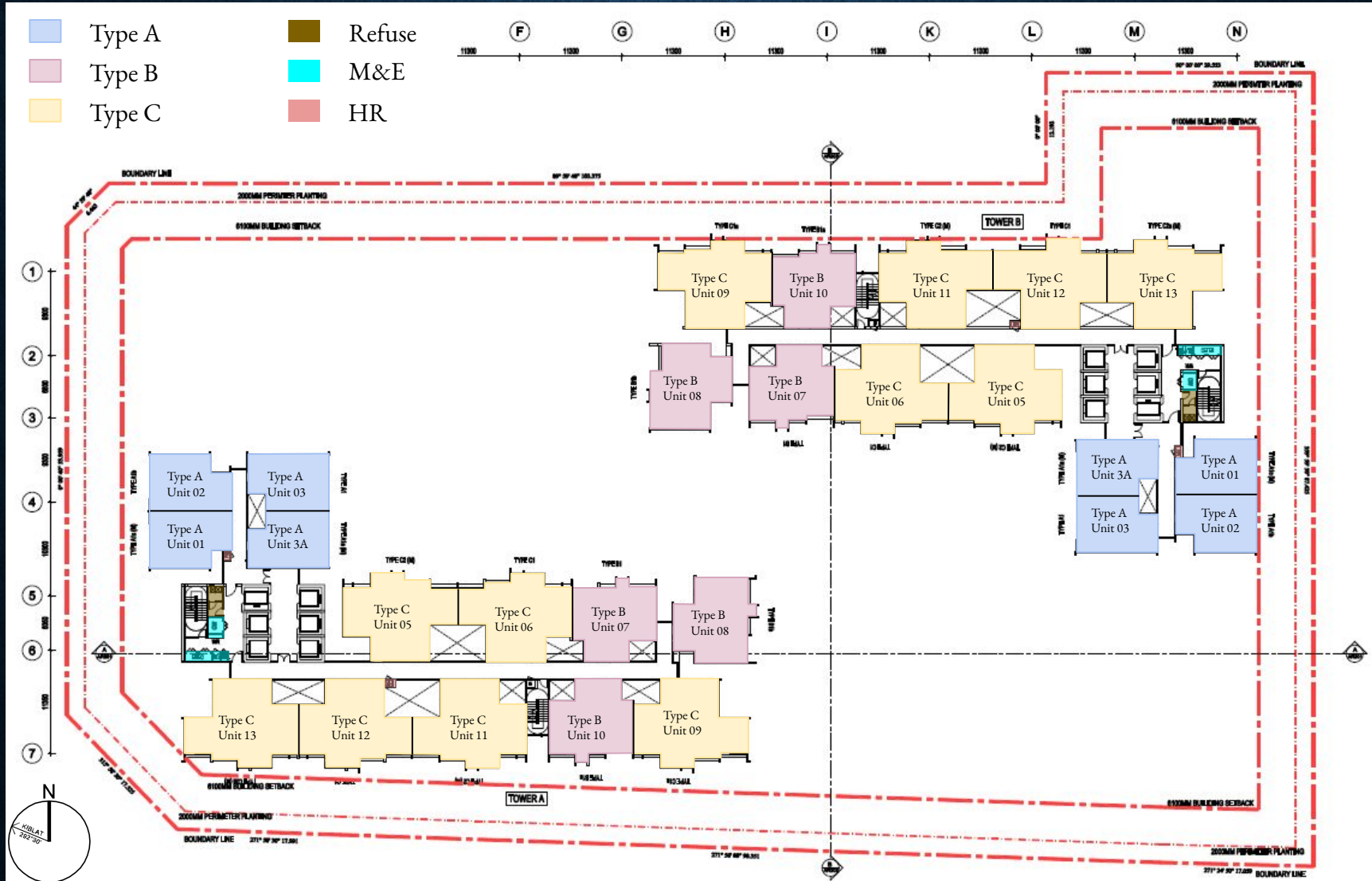
All information, items and/or products herein contained and/or displayed, including but not limited to measurement, features, materials, specifications, brands, colours, plans, drawings, images, pictures, visuals renditions, illustrations and presentation of interiors, furniture and fittings layout, landscapes, roads, access, lifestyle, scale models, show units and/or development are artist's impressions/renderings for illustration purposes only and are subject to change as may be required and/or recommended by the relevant authorities and/or the developer's architects, engineers and/or consultants without prior notification to you. Nothing contained herein shall be taken as identical representation of the actual state thereof or constitute or be construed to constitute an offer, a contract, part of the sale and purchase agreement (SPA), a representation and/or warranty on the part of the developer, unless expressly and specifically incorporated in the SPA. Prospective purchasers are advised to read and scrutinize the SPA together with its enclosures or to engage relevant independent professionals for advice prior to signing of the SPA. The developer and/or other related companies and parties shall neither be held responsible for any claims, error or inaccuracy nor be liable for any losses, damages, costs, expenses, or liabilities that may be incurred, suffered or sustained resulting from any reliance on any information, items and/or products herein contained and/or displayed or any part thereof.

Site Plan & Accessibility



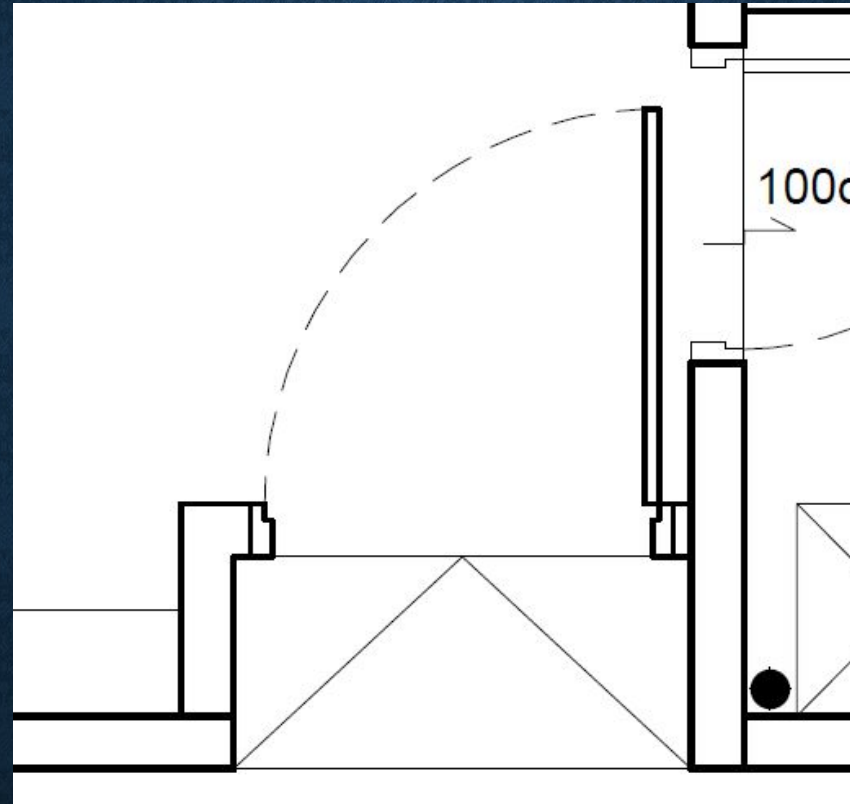
https://360vr.my/sandbox/drafts/exsim_vividz/

Tower A & B - Typical Floor Plan



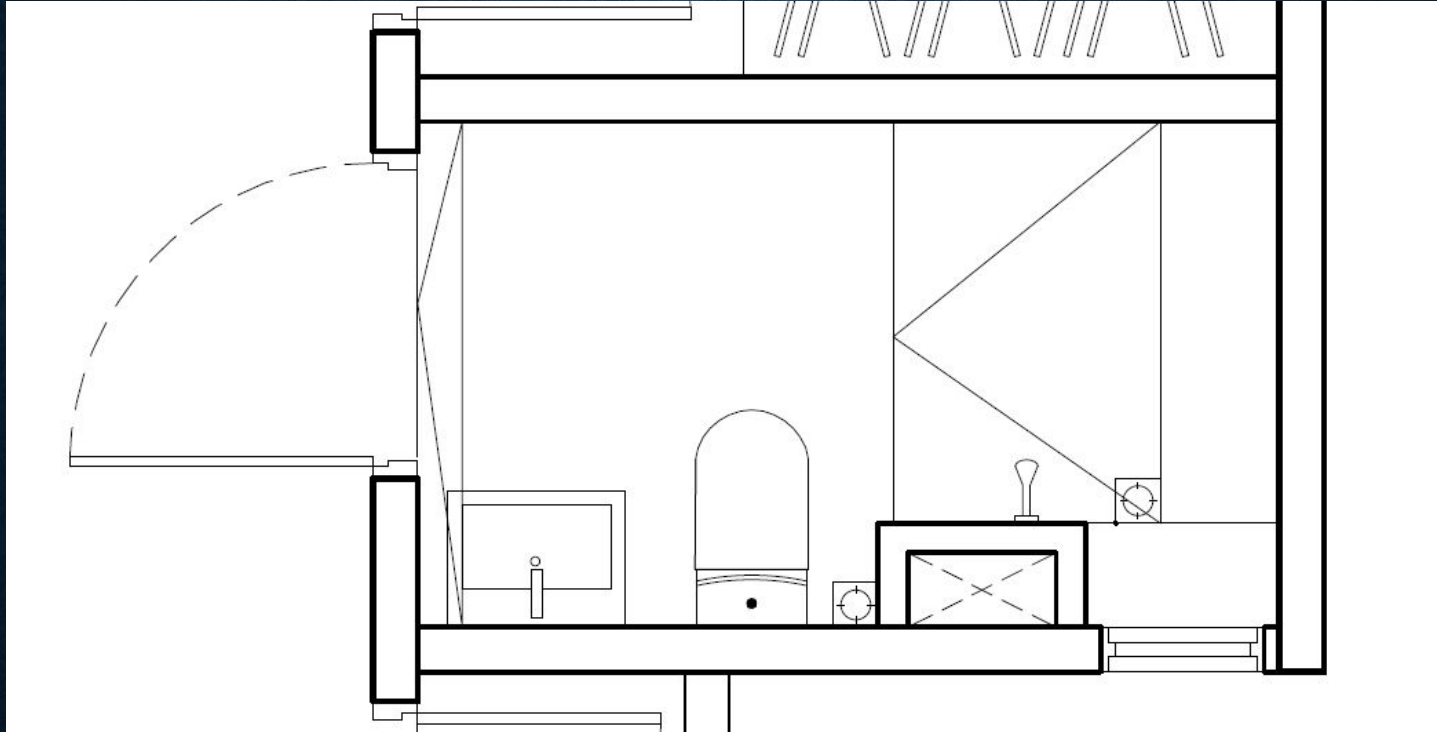
All information, items and/or products herein contained and/or displayed, including but not limited to measurement, features, materials, specifications, brands, colours, plans, drawings, images, pictures, visuals renditions, illustrations and presentation of interiors, furniture and fittings layout, landscapes, roads, access, lifestyle, scale models, show units and/or development are artist's impressions/renderings for illustration purposes only and are subject to change as may be required and/or recommended by the relevant authorities and/or the developer's architects, engineers and/or consultants without prior notification to you. Nothing contained herein shall be taken as identical representation of the actual state thereof or constitute or be construed to constitute an offer, a contract, part of the sale and purchase agreement (SPA), a representation and/or warranty on the part of the developer, unless expressly and specifically incorporated in the SPA. Prospective purchasers are advised to read and scrutinize the SPA together with its enclosures or to engage relevant independent professionals for advice prior to signing of the SPA. The developer and/or other related companies and parties shall neither be held responsible for any claims, error or inaccuracy nor be liable for any losses, damages, costs, expenses, or liabilities that may be incurred, suffered or sustained resulting from any reliance on any information, items and/or products herein contained and/or displayed or any part thereof.

Elderly Friendly feature in Unit



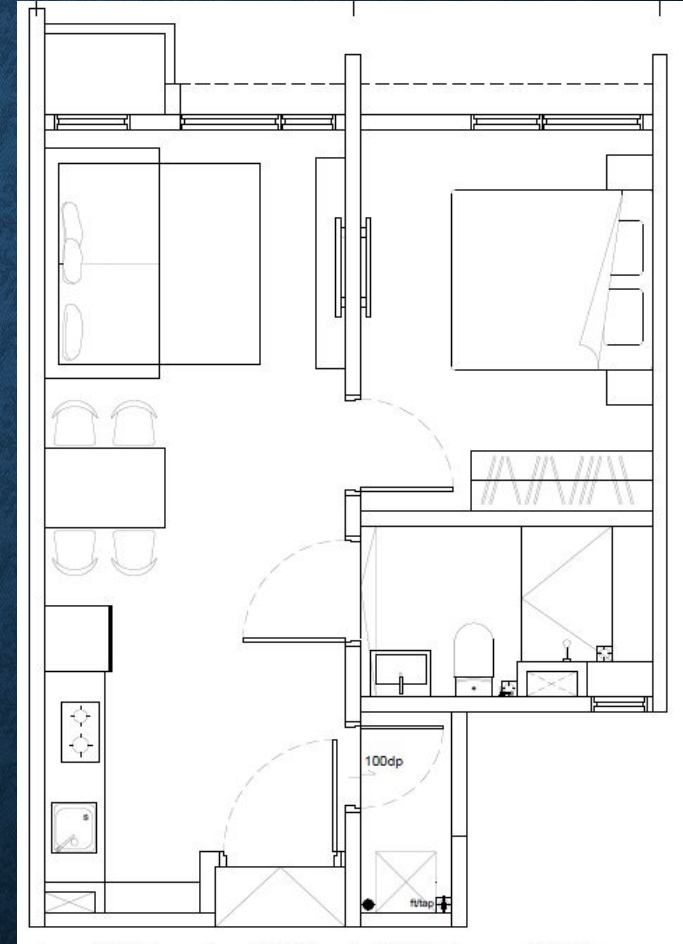
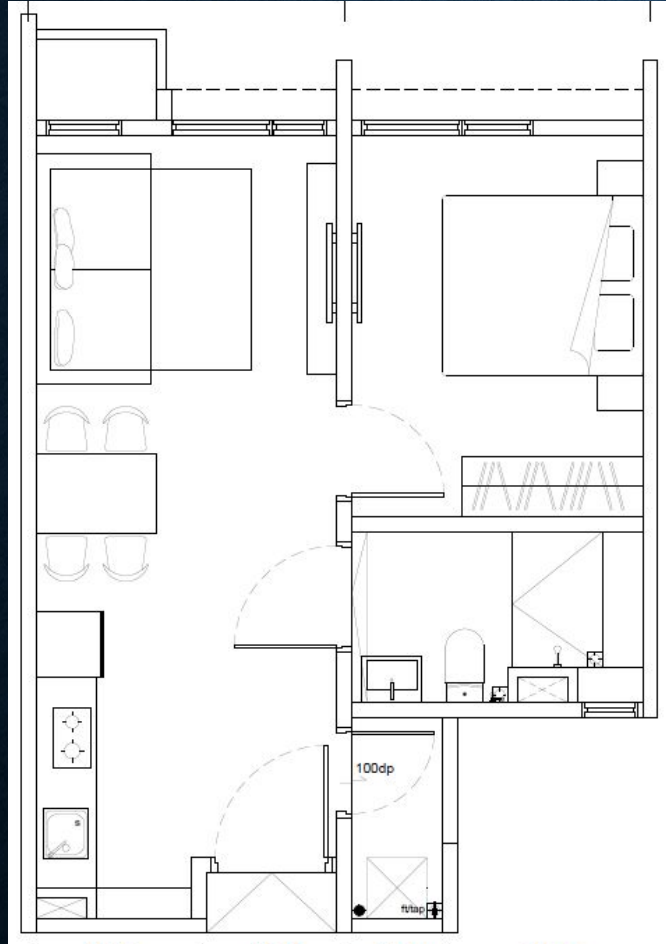
- Ramp in front of main entrance.

Elderly Friendly feature in Unit



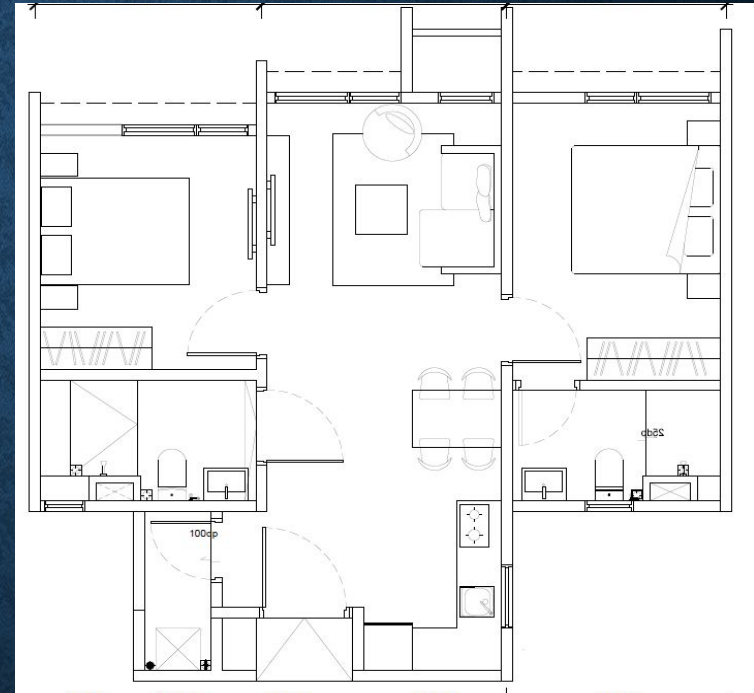
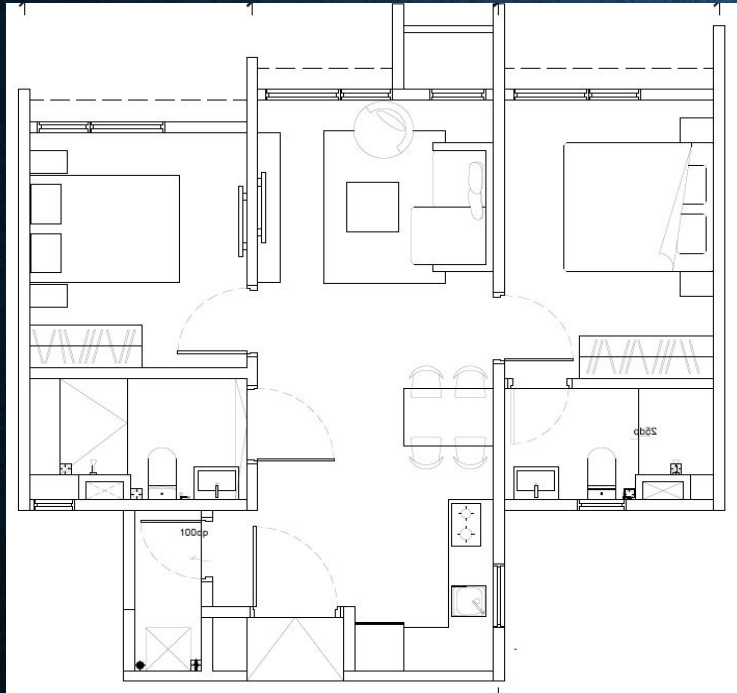
- Wider width bathroom
- Slope instead of drop
- Seating ledge at shower area

Unit Layout - Type A1 & A1a (45 SQM / 484 SQFT)

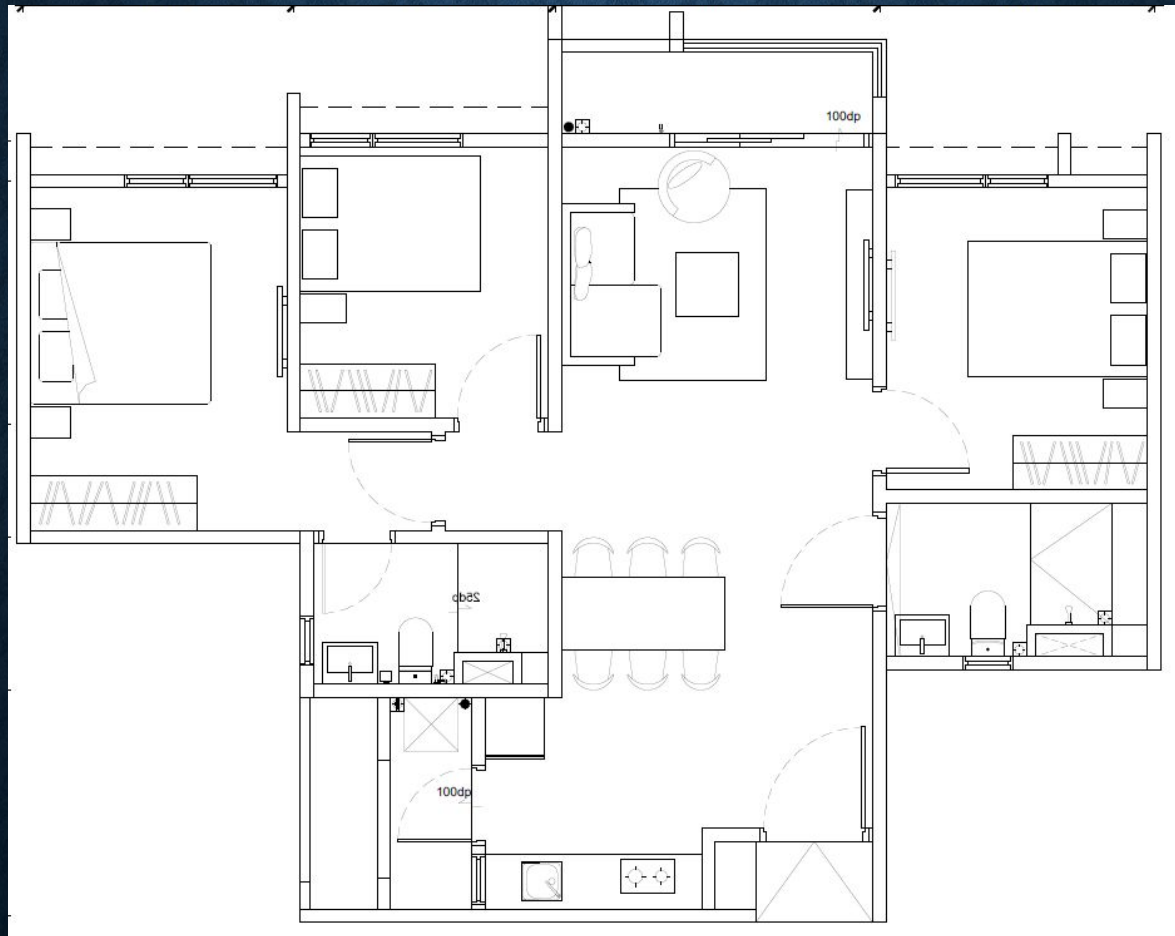


All information, items and/or products herein contained and/or displayed, including but not limited to measurement, features, materials, specifications, brands, colours, plans, drawings, images, pictures, visuals renditions, illustrations and presentation of interiors, furniture and fittings layout, landscapes, roads, access, lifestyle, scale models, show units and/or development are artist's impressions/renderings for illustration purposes only and are subject to change as may be required and/or recommended by the relevant authorities and/or the developer's architects, engineers and/or consultants without prior notification to you. Nothing contained herein shall be taken as identical representation of the actual state thereof or constitute or be construed to constitute an offer, a contract, part of the sale and purchase agreement (SPA), a representation and/or warranty on the part of the developer, unless expressly and specifically incorporated in the SPA. Prospective purchasers are advised to read and scrutinize the SPA together with its enclosures or to engage relevant independent professionals for advice prior to signing of the SPA. The developer and/or other related companies and parties shall neither be held responsible for any claims, error or inaccuracy nor be liable for any losses, damages, costs, expenses, or liabilities that may be incurred, suffered or sustained resulting from any reliance on any information, items and/or products herein contained and/or displayed or any part thereof.

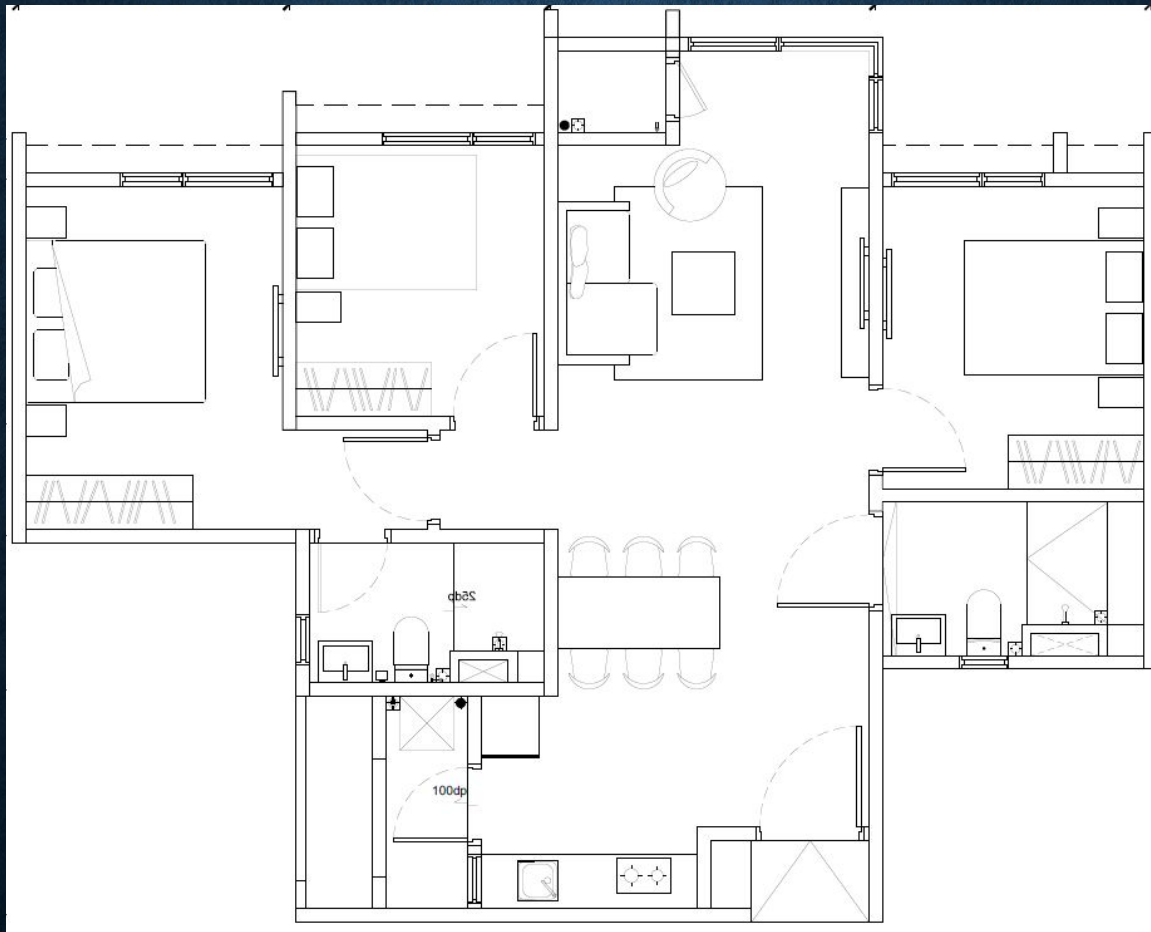
Unit Layout - Type B1 & B1a (64 SQM / 689 SQFT)



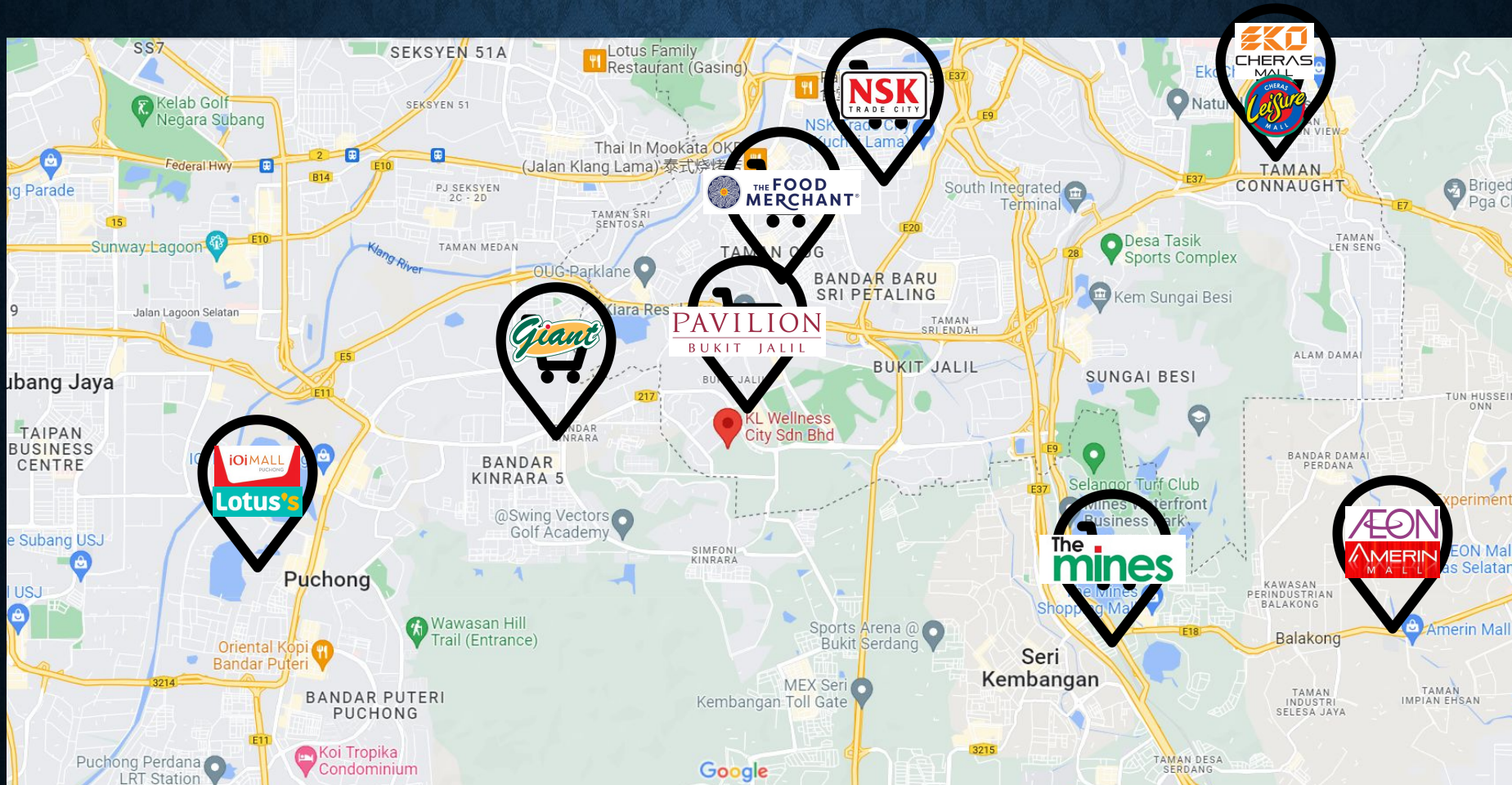
Unit Layout - Type C1 (85 SQM / 915 SQFT)



Unit Layout - Type C2 (85 SQM / 915 SQFT)



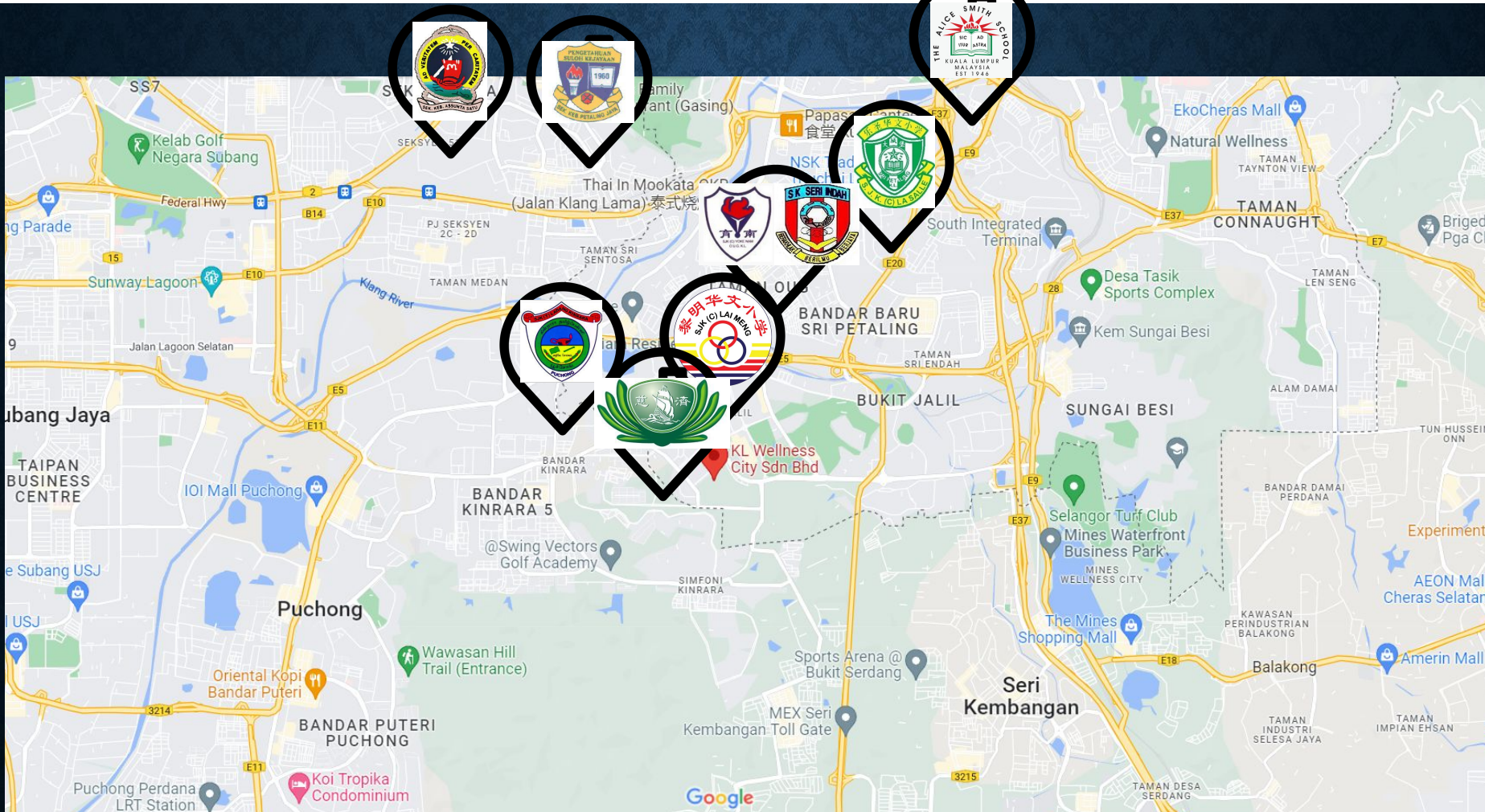
Nearby Grocery Store / Shopping Mall within 15 KM



Nearby Grocery Store / Shopping Mall within 15 KM

1. Pavilion Bukit Jalil @ Bukit Jalil - Distance 1.4 KM
2. Aurora Place Bukit Jalil @ Bukit Jalil - Distance 2.1 KM
3. Giant Hypermarket @ Bukit Kinrara - Distance 5 KM
4. The Food Merchant @ Bukit Jalil - Distance 6.2 KM
5. Pearl Point Shopping Mall @ Old Klang Road - Distance 6.4 KM
6. The Mines Shopping Mall @ Seri Kembangan - Distance 8.2 KM
7. NSK Trade City @ Kuchai Lama - Distance 8.3 KM
8. Ioi Puchong Mall @ Puchong - Distance 8.5 KM
9. Lotus's @ Puchong - Distance 9.3 KM
10. Mid Valley Megamall - Distance 11.5 KM
11. Jaya Shopping Centre - Distance 12.1 KM
12. Amerin Mall - Distance 13.7 KM

Nearby Primary School within 15 KM

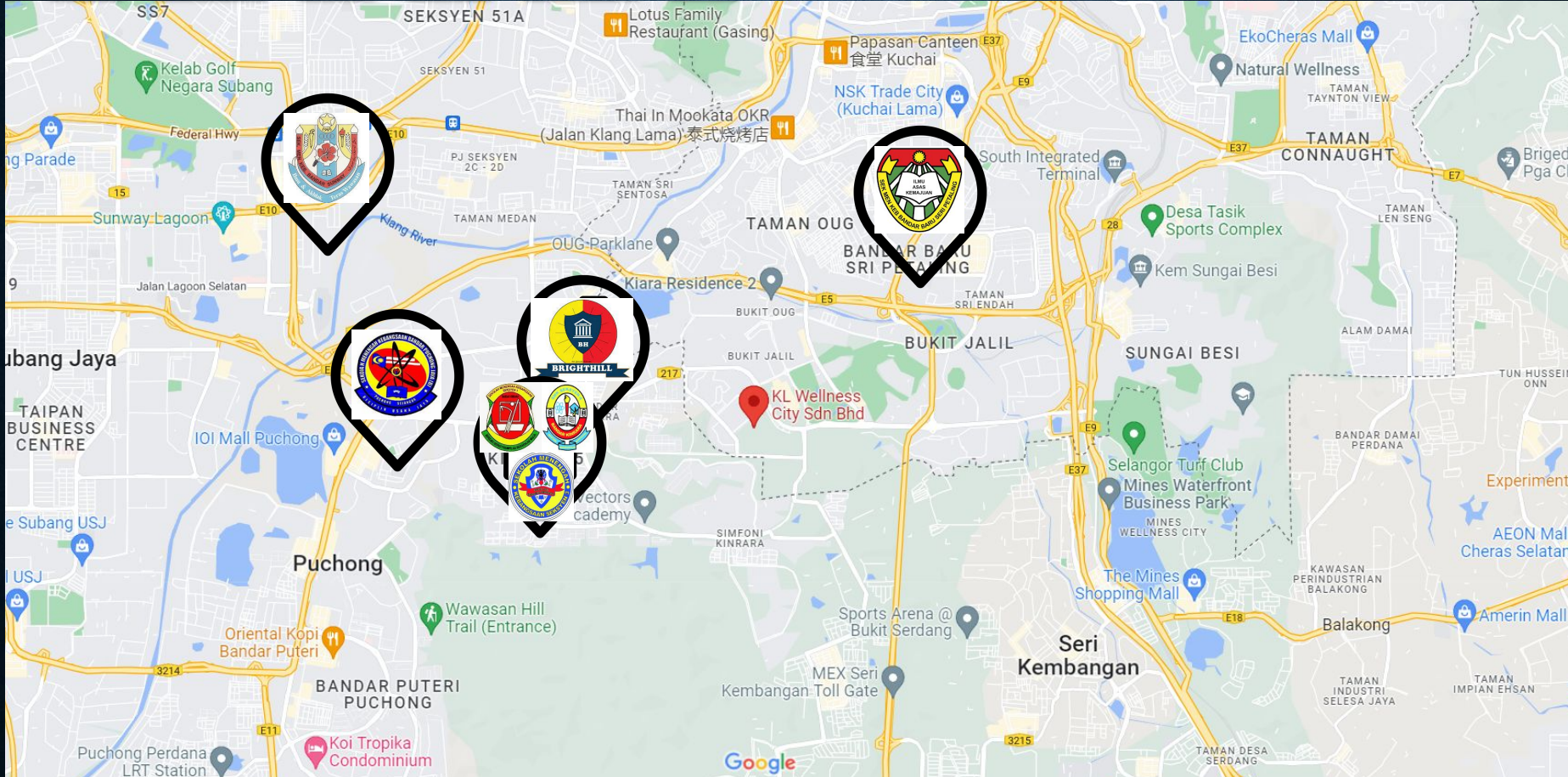


All information, items and/or products herein contained and/or displayed, including but not limited to measurement, features, materials, specifications, brands, colours, plans, drawings, images, pictures, visuals renditions, illustrations and presentation of interiors, furniture and fittings layout, landscapes, roads, access, lifestyle, scale models, show units and/or development are artist's impressions/renderings for illustration purposes only and are subject to change as may be required and/or recommended by the relevant authorities and/or the developer's architects, engineers and/or consultants without prior notification to you. Nothing contained herein shall be taken as identical representation of the actual state thereof or constitute or be construed to constitute an offer, a contract, part of the sale and purchase agreement (SPA), a representation and/or warranty on the part of the developer, unless expressly and specifically incorporated in the SPA. Prospective purchasers are advised to read and scrutinize the SPA together with its enclosures or to engage relevant independent professionals for advice prior to signing of the SPA. The developer and/or other related companies and parties shall neither be held responsible for any claims, error or inaccuracy nor be liable for any losses, damages, costs, expenses, or liabilities that may be incurred, suffered or sustained resulting from any reliance on any information, items and/or products herein contained and/or displayed or any part thereof.

Nearby Primary School within 15 KM

1. Tzu Chi International School Kuala Lumpur - Distance 1.4 KM
2. SJK (C) Lai Meng - Distance 3.2 KM
3. SJK (T) Ladang Kinrara - Distance 3.4 KM
4. Sekolah Kebangsaan Seri Indah - Distance 6.1 KM
5. SJK(C) Yoke Nam - Distance 7.1 KM
6. SJK (C) La Salle - Distance 7.2 KM
7. Sekolah Kebangsaan Petaling Jaya - Distance 9.4 KM
8. Sekolah Kebangsaan Assunta Satu - Distance 11.8 KM
9. Alice Smith School (Primary Campus) - Distance 13.8 KM
10. Kung Ming Chinese Primary School - Distance 15.4 KM

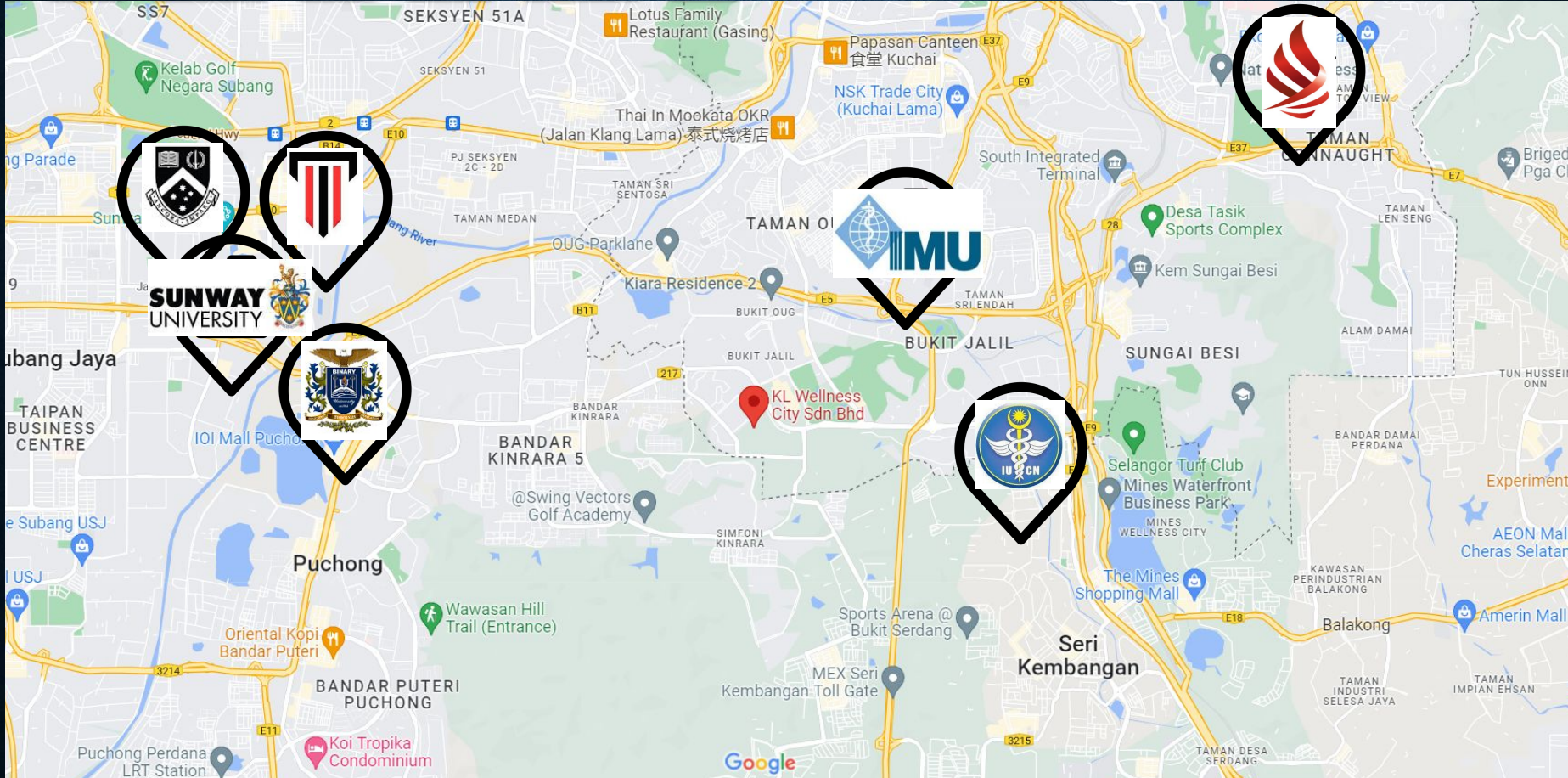
Nearby Secondary school within 15 KM



Nearby Secondary school within 15 KM

1. SMK Seksyen 1 Bandar Kinrara - Distance 3.3 KM
2. SMK Seksyen 4 Bandar Kinrara - Distance 3.4 KM
3. SMK Bukit Jalil - Distance 3.8 KM
4. Brighthill International (Primary & Secondary Campus) - Distance 4.3 KM
5. SMK Seksyen 3 Bandar Kinrara - Distance 5.3 KM
6. SMK Bandar Baru Seri Petaling - Distance 5.5 KM
7. SMK Bandar Puchong Jaya (B) - Distance 6.2 KM
8. SMK Petaling - Distance 8.3 KM
9. SMK Seri Kembangan - Distance 8.9 KM
10. SMK Bandar Sunway - Distance 10.4 KM
11. Catholic High School PJ - Distance 11.0 KM
12. SMK Sungai Besi - Distance 11.5 KM

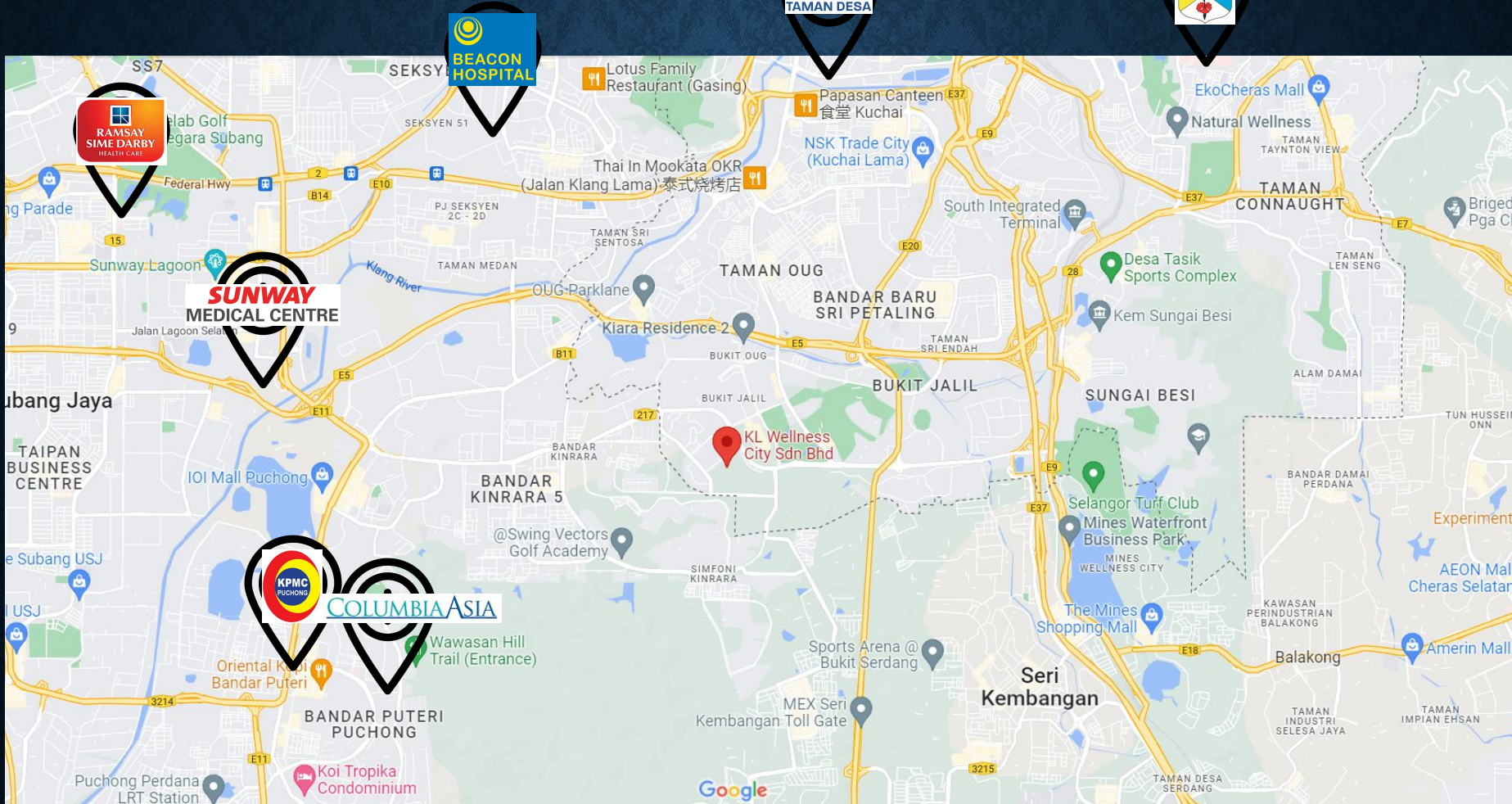
Nearby University & College within 15 KM



Nearby University & College within 15 KM

1. International Medical University - Distance 5.0 KM
2. International University & College of Nursing - Distance 6.9 KM
3. Binary University of Management & Entrepreneurship - Distance 7.1 KM
4. Sunway University - Distance 9.2 KM
5. Monash University Malaysia - Distance 9.4 KM
6. Taylor's Lakeside Campus - Distance 10.7 KM
7. UCSI University - Distance 11.0 KM
8. Saito University College - Distance 11.2 KM
9. ALFA University College (AUC) - Distance 13.2 KM
10. Lincoln University College - Distance 15.0 KM

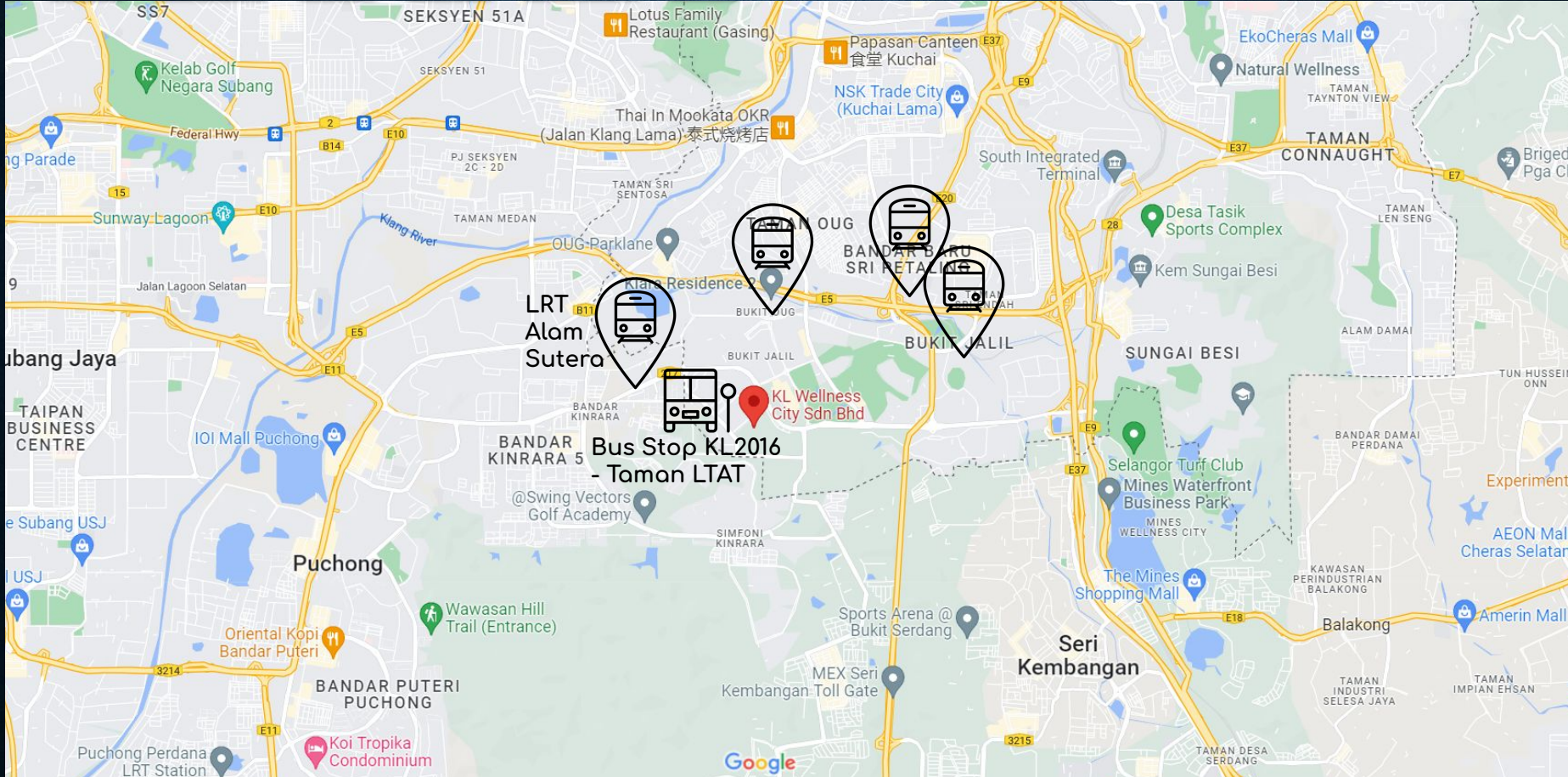
Nearby Medical Center / Hospital within 15 KM



Nearby Medical Center / Hospital within 15 KM

1. KMI Taman Desa Medical Centre - Distance 8.1 KM
2. Sunway Medical Centre - Distance 8.4 KM
3. KPMC Puchong Specialist Centre - Distance 9.7 KM
4. Columbia Asia Hospital Puchong - Distance 9.8 KM
5. Assunta Hospital Petaling Jaya - Distance 10.5 KM
6. Beacon Hospital Sdn Bhd - Distance 10.7 KM
7. Subang Jaya Medical Centre (SJMC) - Distance 12.6 KM
8. University Kebangsaan Malaysia Medical Centre - Distance 14.9 KM
9. University Malaya Medical Centre - Distance 15.7 KM
10. Pantai Hospital Kuala Lumpur - Distance 17.0 KM

Nearby Public Transport within 5 KM



Major Public Transport & Highway / Expressway

Public Transportation

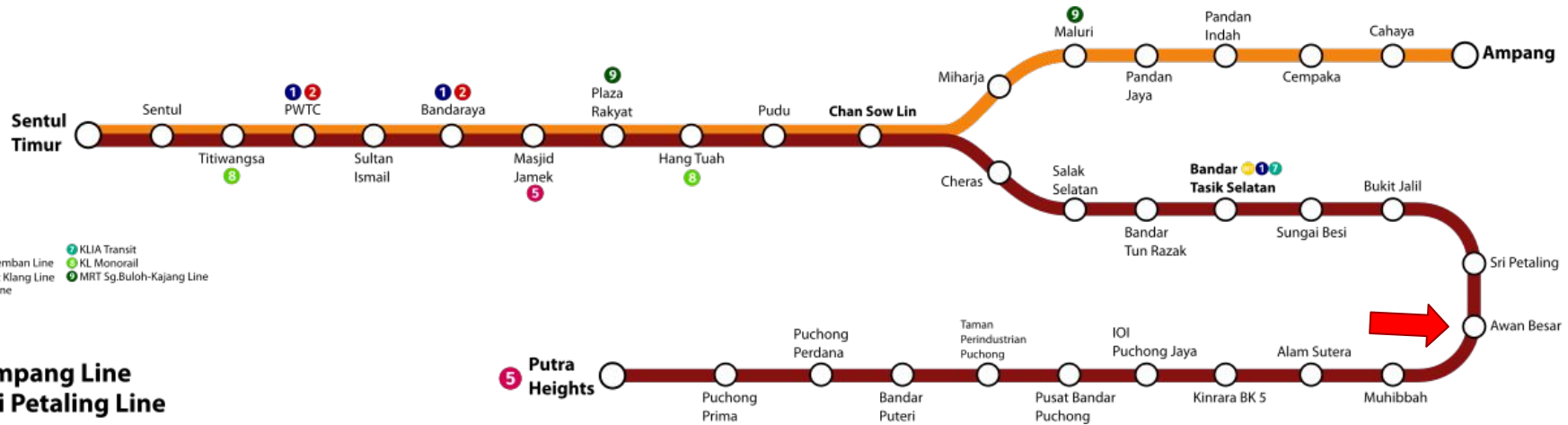
- LRT Sri Petaling line (Putra Heights to Sentul Timur): LRT Alam Sutera SP21 - Distance 2 KM
- Rapid KL: KL2016 Taman LTAT (Route T581) - Distance 0.5 KM

Major Highway / Expressway

- KESAS Highway
- Lebuhraya NPE : Kuchai Link
- Maju Expressway
- Sprint Highway
- ELITE Expressway North Bound
- Sungai Besi Expressway

Public Transport

LRT Sri Petaling Line



Shuttle Bus Route

Proposed Route

The Vividz



Pavilion Bukit Jalil



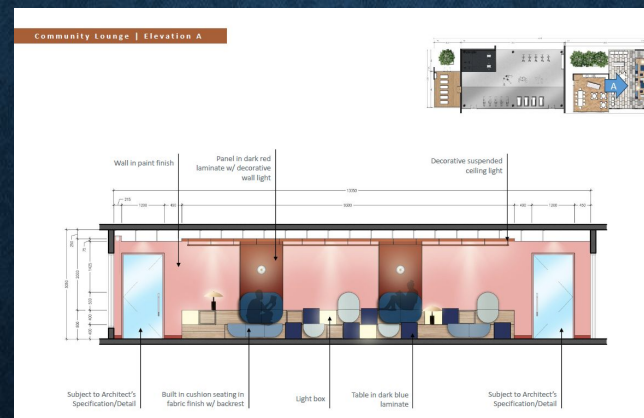
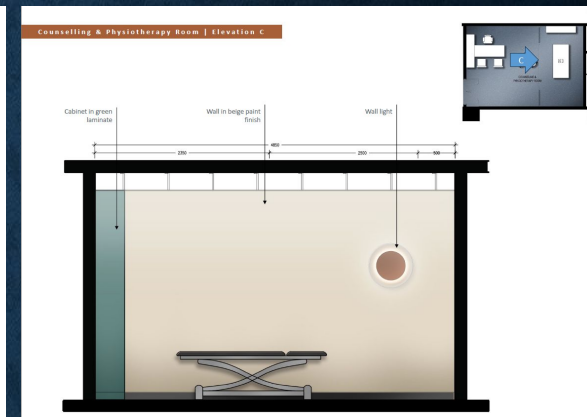
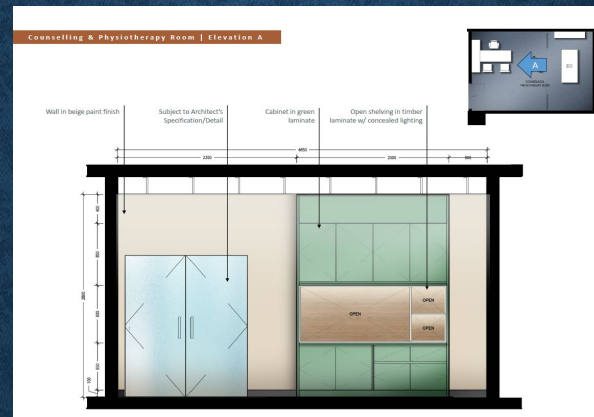
The Link Bukit Jalil



Awan Besar LRT

Wellness Facilities

1	<p>Counselling & Physiotherapy Room</p> <ul style="list-style-type: none"> - A room that allowed resident to book for their 1 on 1 counselling or physiotherapy session.
2	<p>Community Lounge</p> <ul style="list-style-type: none"> - A place for gathering.
3	<p>Salt Sauna</p>



START New Launches Find Agents **EdgeProp** News Q

MAIN > NEWS

KL Wellness City launches tertiary hospital as part of the township's first phase

Chelsea J Lim / theedgemalaysia.com May 03, 2024 | Updated 3 months ago



KL WELLNESS CITY SDN BHD & KL INTERNATIONAL HOSPITAL SDN BHD

KL WELLNESS CITY Wellness Redefined

KL INTERNATIONAL HOSPITAL SDN BHD

KL INTERNATIONAL HOSPITAL SDN BHD
PUSKAS
RM 2.8 BILLION FOR B40
MINISTRY OF HEALTH INITIATIVES

KL-wellness-city

1 (From left) Ministry of Health director of medical development division Datuk Dr Mohd Azman Yacob, KL Wellness City managing director Datuk Dr Colin Lee, Health Minister Datuk Seri Dr Haji Dzulkefly Ahmad and Ministry of Health deputy director of medical practice division Dr Mimi Zalwani Zakaria seen during the launching event on May 2, 2024 in Bukit Jalil, Kuala Lumpur. (Photo by KL Wellness City)

- KL International Tertiary Hospital will have an estimated development value of RM1 billion. Substructure works have been completed and construction works of the main buildings is currently underway. The hospital is expected to complete in 2Q2026 and to open in 3Q2026.

Setia HOMES 17 - 17 Aug - Sept Setia Galeri Natio Visit us for exciting deals and activities #SetiaTurns50

EdgeProp.my Gain access to our **LOCATION ANALYSE**

IZARA, BAYU SUTERA Lakeside Residences with smart home fe

All information, items and/or products herein contained and/or displayed, including but not limited to measurement, features, materials, specifications, brands, colours, plans, drawings, images, pictures, visuals renditions, illustrations and presentation of interiors, furniture and fittings layout, landscapes, roads, access, lifestyle, scale models, show units and/or development are artist's impressions/renderings for illustration purposes only and are subject to change as may be required and/or recommended by the relevant authorities and/or the developer's architects, engineers and/or consultants without prior notification to you. Nothing contained herein shall be taken as identical representation of the actual state thereof or constitute or be construed to constitute an offer, a contract, part of the sale and purchase agreement (SPA), a representation and/or warranty on the part of the developer, unless expressly and specifically incorporated in the SPA. Prospective purchasers are advised to read and scrutinize the SPA together with its enclosures or to engage relevant independent professionals for advice prior to signing of the SPA. The developer and/or other related companies and parties shall neither be held responsible for any claims, error or inaccuracy nor be liable for any losses, damages, costs, expenses, or liabilities that may be incurred, suffered or sustained resulting from any reliance on any information, items and/or products herein contained and/or displayed or any part thereof.